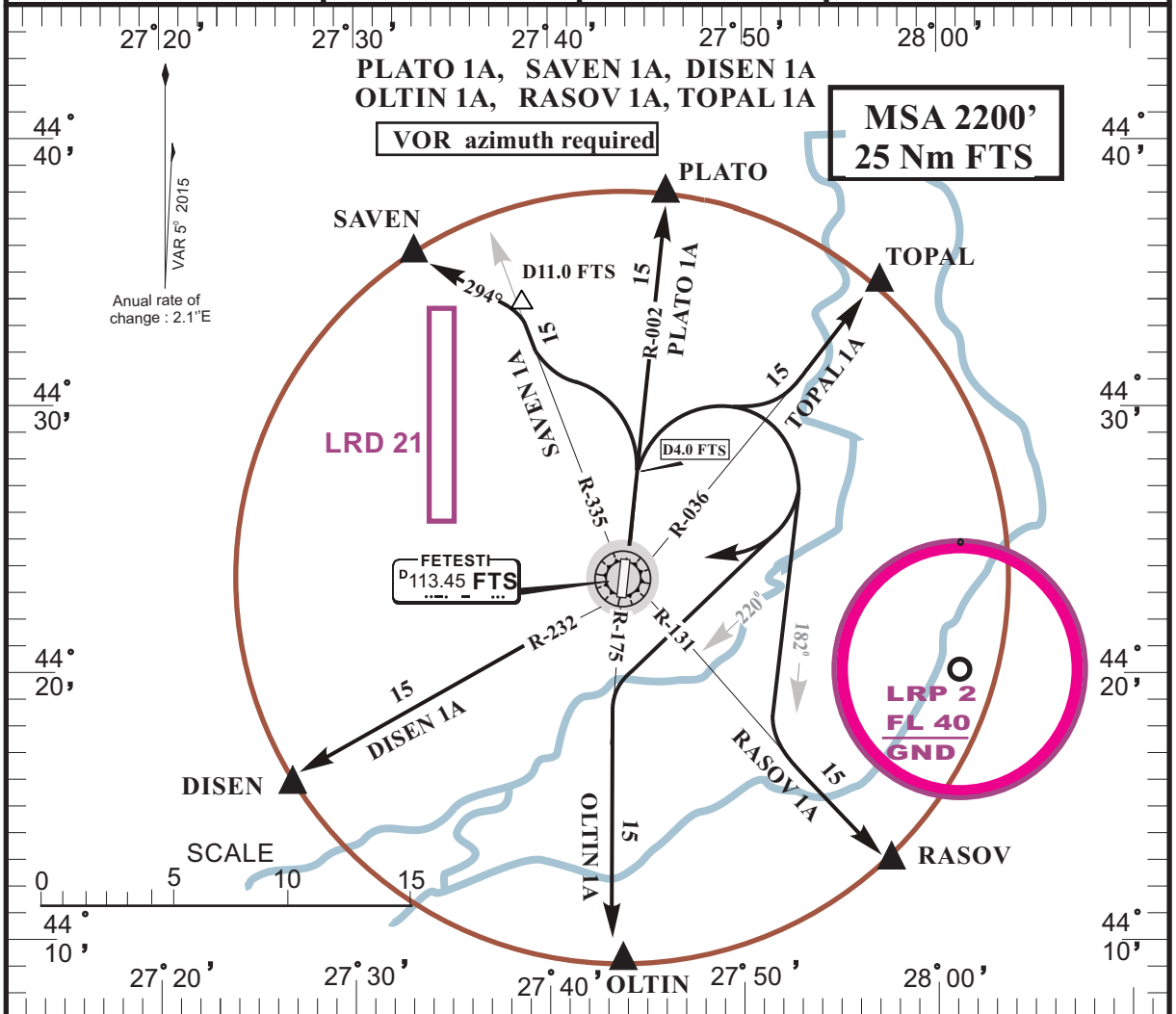


LRFT/FTS
BORCEA-FETESTI

FETEȘTI, ROMANIA
SID RWY 36

<i>RUBIN INFO</i> 130.800 /240.600ALT	<i>RUBIN CONTROL</i> 130.800	<i>RUBIN APP</i> 123.375 /309.625	<i>RUBIN TWR/GND</i> 119.325 /232.850	<i>ATIS</i> 122.525
<i>VOR FTS</i> 113.45	<i>Trans Altitude: 4000'</i> <i>Trans Level: by ATC</i>	<i>Ad Elev</i> 183'	LDA 8200' (2500 m)	



DEPARTURE ROUTE DESCRIPTION

NOTE: VOR azimuth required. After take-off start turn at D 4.0 FTS.

PLATO 1A	After take-off climb on R-002 FTS to FL050 inbound PLATO .
SAVEN 1A	After take-off turn left climbing to FL050 to intercept R-335 FTS. At D 11.0 FTS turn left on track 294° direct to SAVEN .
DISEN 1A	After take-off turn right climbing to FL050 inbound FTS to intercept R-232 FTS inbound DISEN .
OLTIN 1A	After take-off turn right on track 220° climbing to FL050 to intercept R-175 FTS inbound OLTIN .
RASOV 1A	After take-off turn right on track 182° climbing to FL050 to intercept R-131 FTS inbound RASOV .
TOPAL 1A	After take-off turn right climbing to FL050 to intercept R-036 FTS inbound TOPAL .